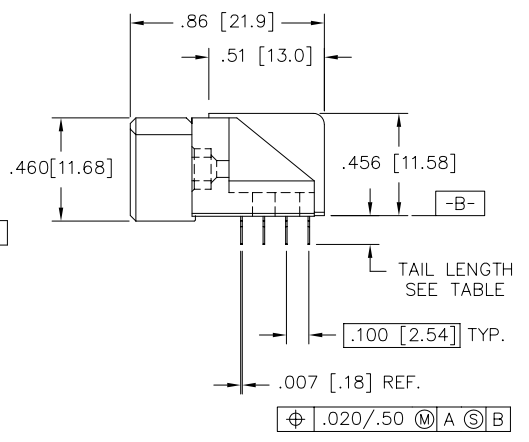
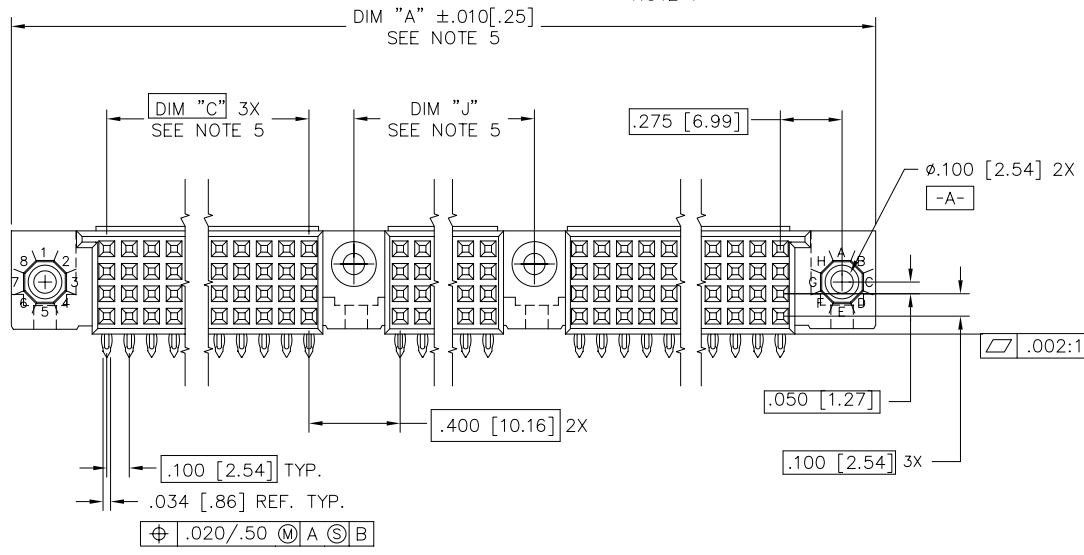
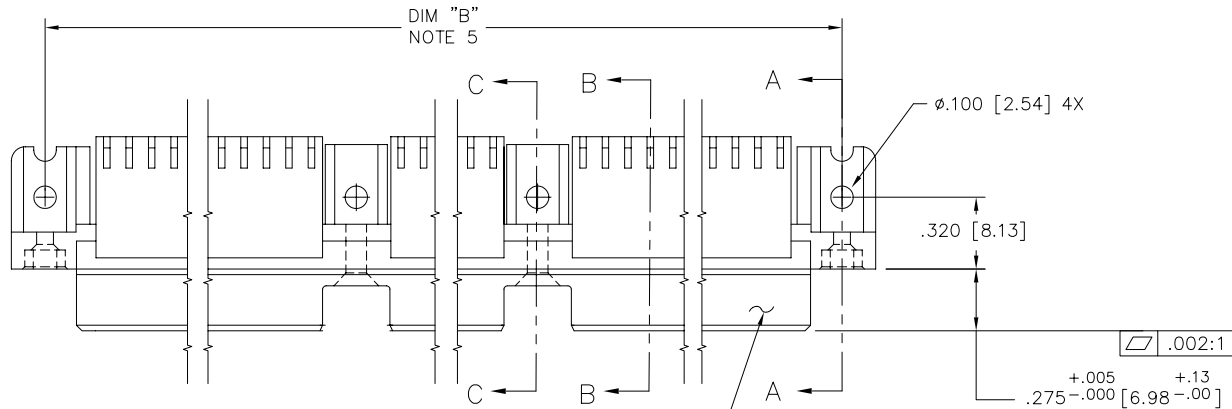


PRODUCT NUMBER
SEE TABLE



mat'l. code SEE NOTE 3		surface ISO 1302 ✓		tolerance ISO 406 ISO 1101		projection INCH/MM		product family HPC	
ltr	ecn	no	dr	date		tolerances unless otherwise specified		title	
N	v10820	JRW	2/1/01	angles	linear	.xx±.01/.3		4 ROW R/A RECEPTACLE PRESS FIT, 2 GUIDE PINS	
P	v10947	CGD	2/28/01	0°±2'		.xxx±.005/.13		scale 1:1	
R	v10960	MEM	3/14/01			.xxxx±.0020/.051		dwg no 50644 sheet 1 of 6 size A3	
S	v05-0512	DAI	8/01/05	dr	G.PETERS	6/12/93		FCJ	
T	v05-1054	HTB	11/16/05	enr	S.CLARK	6/12/93		type Product Customer Drawing	
U	M06-0283	MHT	7/27/06	chr	S.CLARK	6/12/93			
V	M07-0099	AGS	2/08/07	appd	S.CLARK	6/12/93			
sheet	revision	V	V	V	V	V	V		
index	sheet	1	2	3	4	5	6		



Copyright FCI

form: A3

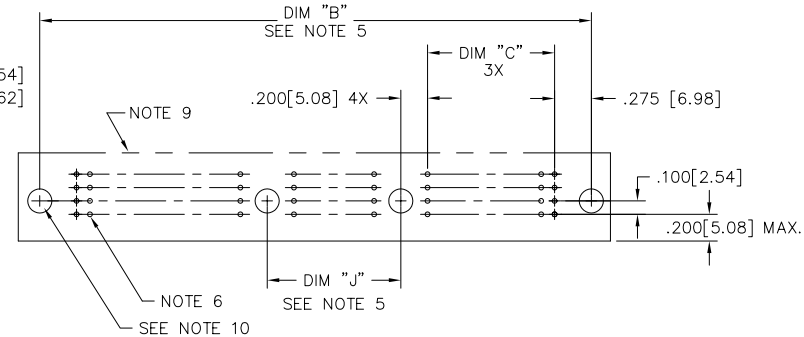
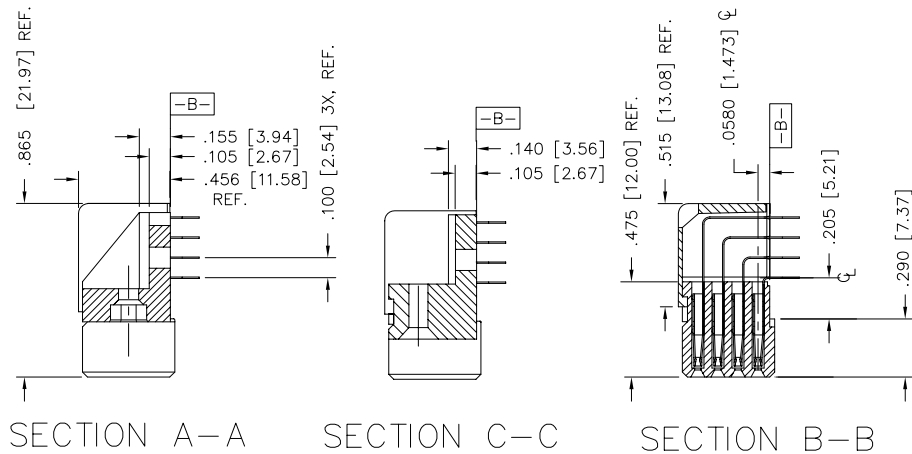
PRODUCT NUMBER
SEE TABLE

NOTES:

- ① PRODUCT NUMBERING CODE:
50644 - X YYY Z S LF
 LEAD FREE (OPTIONAL)
 SPECIAL FEATURES (NOTE 10)
 TAIL LENGTH (SEE TABLE)
 NO. OF POSITIONS (NOTE 2)
 PLATING SEE TABLE
 BASE NUMBER

- PRODUCT NUMBERING CODE FOR SELECT LOAD
50644- XX YYY LF
 LEAD FREE (OPTIONAL)
 SEQUENCE NUMBER
 ALWAYS "XX"
 BASE NUMBER

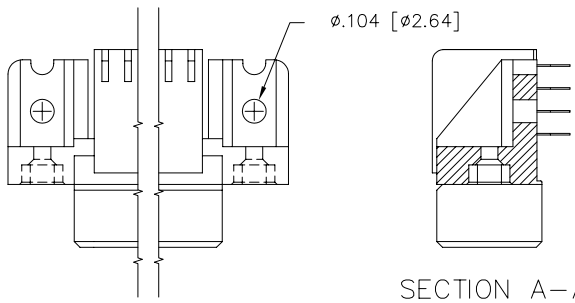
- ② THIS PRODUCT IS CONFIGURED IN SIZES OF 30 thru 150 COLUMNS IN INCREMENTS OF THREE. i.e.: 30,33,36,.....147,150.
- ③ MATERIAL PRESS BLOCK: HIGH TEMP. THERMOPLASTIC
 MATERIAL HOUSING: GLASS AND MINERAL FILLED
 HIGH TEMP. THERMOPLASTIC. FLAME RETARDANT
 PER UL94V-0. COLOR: BLACK.
 CONTACT MATERIAL: BeCu.
4. PLATING:
 CONTACT AREA - SEE PRODUCT NUMBER TABLE
 TAILS-EITHER TIN OR TIN LEAD, SEE PRODUCT NUMBER TABLE
- ⑤ DIMENSION "A" CALCULATION = $.100 (2.54) \times \text{NO. OF COLUMNS} + 1.35 [34.3]$
 DIMENSION "B" CALCULATION = $.100 (2.54) \times \text{NO. OF COLUMNS} + 1.050 [26.67]$
 DIMENSION "C" CALCULATION = $.100 (2.54) \times \text{NO. OF COLUMNS} - \text{DIVDED BY } 3 - .100 [2.54]$
 DIMENSION "J" CALCULATION = $.100 (2.54) \times \text{NO. OF COLUMNS} - \text{DIVDED BY } 3 + .300 [7.62]$
- ⑥ DRILLED HOLE DIA. OF $.0453 \pm .001$ FINISHED TO $.0400 \pm .0030$ BY PLATING SnPb(60/40), $.0003 - .0006$ w/Cu UNDERPLATING AS NEEDED.
- ⑦ MANUFACTURE'S LOGO, P/N, AND LOT CODE TO APPEAR ON THIS SURFACE.
8. THIS HOUSING WILL WITHSTAND EXPOSURE TO 260°C PEAK TEMPERATURE FOR 10-30 SECONDS IN A CONVECTION, INFRA-RED OR VAPOR PHASE REFLOW OVEN.
- ⑨ FOR PCB STAY AWAY ZONE SEE TA-0954.
- ⑩ SPECIAL FEATURES:
 - = IF NO SPECIAL FEATURE CODE IS SELECTED, CONNECTOR WILL APPEAR AS SHOWN. PCB MOUNTING HOLE DIMENSION TO BE $\phi .120 \pm .003 [3.05 \pm 0.07]$
 "A" = IF SPECIFIED, CONNECTOR WILL APPEAR AS SHOWN ON SHEET 3. PCB MOUNTING HOLE DIMENSION TO BE $\phi .100 \pm .003 [2.54 \pm 0.07]$.
 "B" = IF SPECIFIED, CONNECTOR WILL HAVE PRE-INSTALLED EYELET FOR P.C.B. ATTACHMENT IN A $\phi .100 \pm .003 [2.54 \pm 0.07]$ MOUNTING HOLE. SEE SHEET 3. (AVAILABLE IN "E" TAIL LENGTH. ONLY).
 "C" = IF SPECIFIED, CONNECTOR WILL HAVE PRE-INSTALLED EYELET FOR P.C.B. ATTACHMENT IN A $\phi .120 \pm .003 [2.54 \pm 0.07]$ MOUNTING HOLE. SEE SHEET 3.
 "D" = IF SPECIFIED, CONNECTOR WILL HAVE PRE-INSTALLED EYELET WITH MOLDED GUIDE PINS FOR P.C.B. ATTACHMENT IN A $\phi .120 \pm .003 [2.54 \pm 0.07]$ MOUNTING HOLE. SEE SHEET 3.
- ⑪ THIS PRODUCT (WITH "LF" SUFFIX) MEETS EUROPEAN UNION DIRECTIVES AND OTHER COUNTRY REGULATIONS AS DESCRIBED IN GS-22-008.



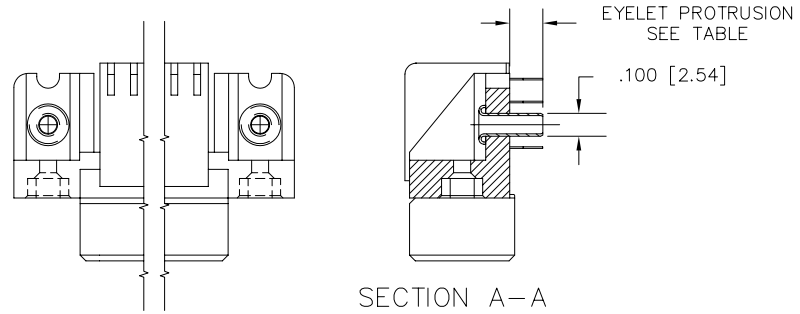
RECOMMENDED PCB LAYOUT
(ALL HOLES LOCATED ON $.100 [2.54]$ GRID UNLESS OTHERWISE SHOWN)

mat'l. code SEE NOTE 3		surface ISO 1302 ✓		tolerance ISO 406 ISO 1101		projection INCH/MM		product family HPC	
ltr	ecn	no	dr	date		tolerances unless otherwise specified		title	
v				angles	linear	.XX±.01/.3 .XXX±.005/.13 .XXXX±.0020/.051		4 ROW R/A RECEPTACLE PRESS FIT, 2 GUIDE PINS	
				0°±2'		scale 1:1		dwg no 50644	
				dr	G.PETERS	6/12/93	FCJ	sheet2 of 6 size	
				enr	S.CLARK	6/12/93		A3	
				chr	S.CLARK	6/12/93			
				appd	S.CLARK	6/12/93			
sheet index		revision sheet						type Product Customer Drawing	

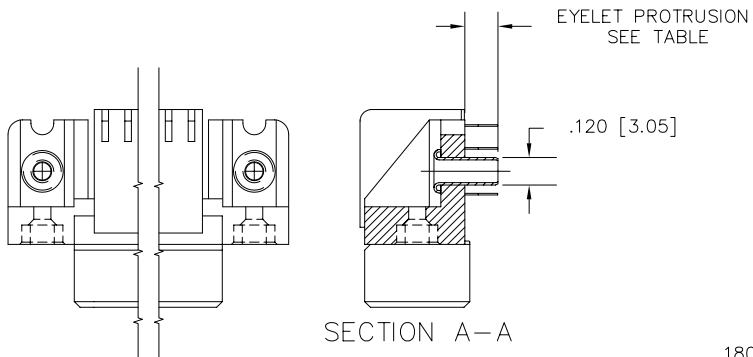
PRODUCT NUMBER
SEE TABLE



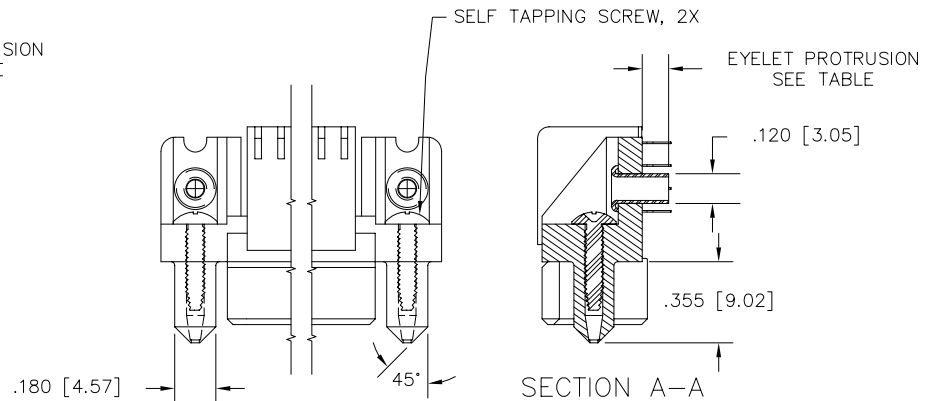
SPECIAL FEATURE OPTION A



SPECIAL FEATURE OPTION B



SPECIAL FEATURE OPTION C



SPECIAL FEATURE OPTION D

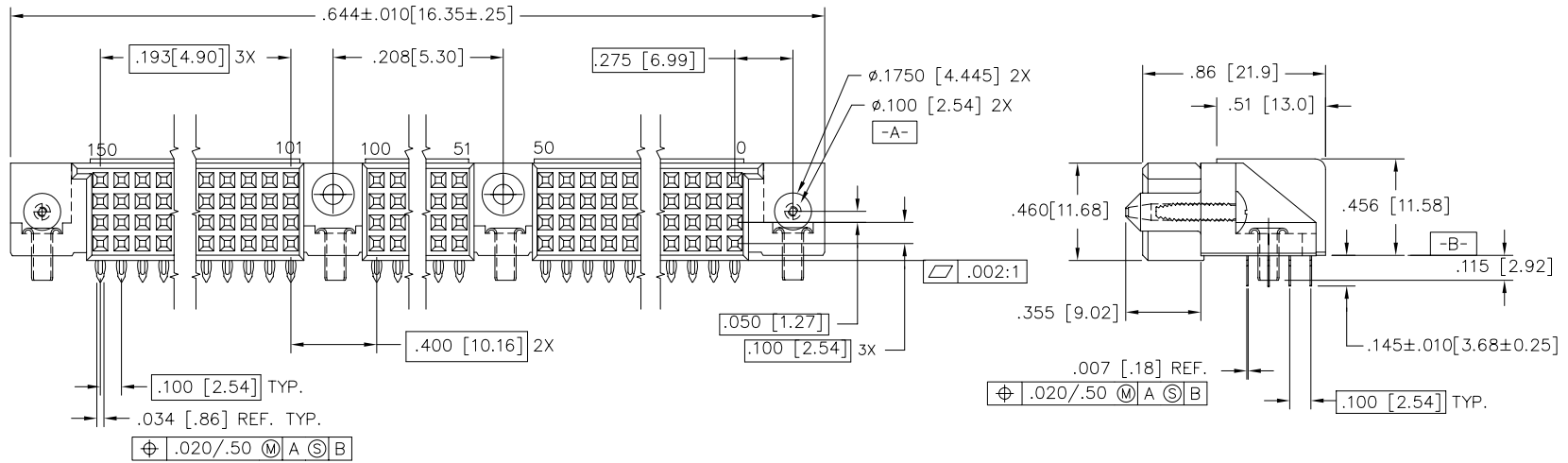
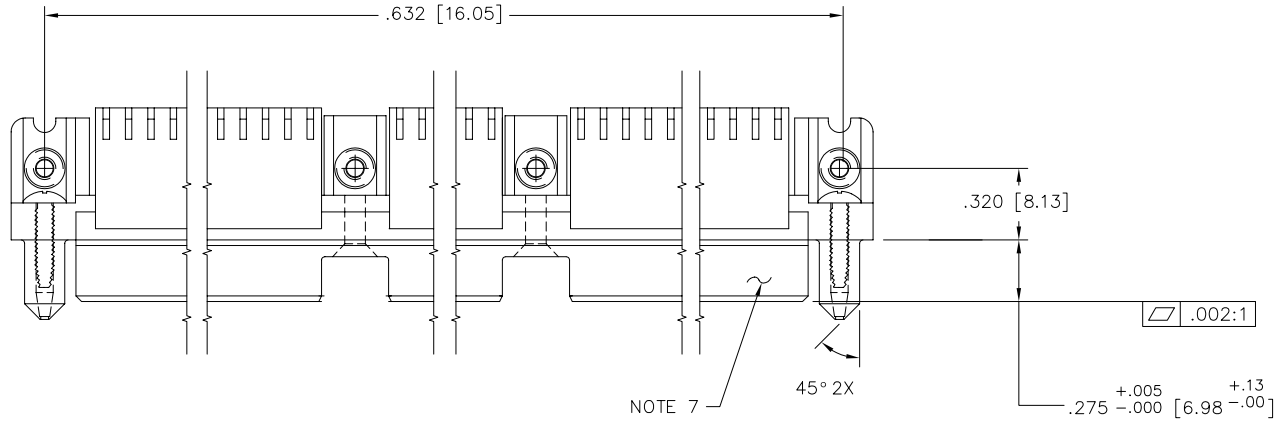
FCI
FCIconnect.com

Copyright FCI


mat'l. code		surface ISO 1302 ✓		tolerance ISO 406 ISO 1101		projection INCH/MM		product family HPC	
ltr	ecn	no	dr	date		tolerances unless otherwise specified		title	
V						angles	linear	4 ROW R/A RECEPTACLE PRESS FIT, 2 GUIDE PINS	
						0°±2'	.XX±.01/.3 .XXX±.005/.13 .XXXX±.0020/.051	scale 1:1	
			dr	G.PETERS	6/12/93			FCI	
			enr	S.CLARK	6/12/93			dwg no 50644 sheet 3 of 6 size A3	
			chr	S.CLARK	6/12/93			type Product Customer Drawing	
			appd	S.CLARK	6/12/93				
sheet index	revision sheet								

PRODUCT NUMBER
50644-XX001
50644-XX001LF

50644-XX001 AND 50644-XX001LF ONLY

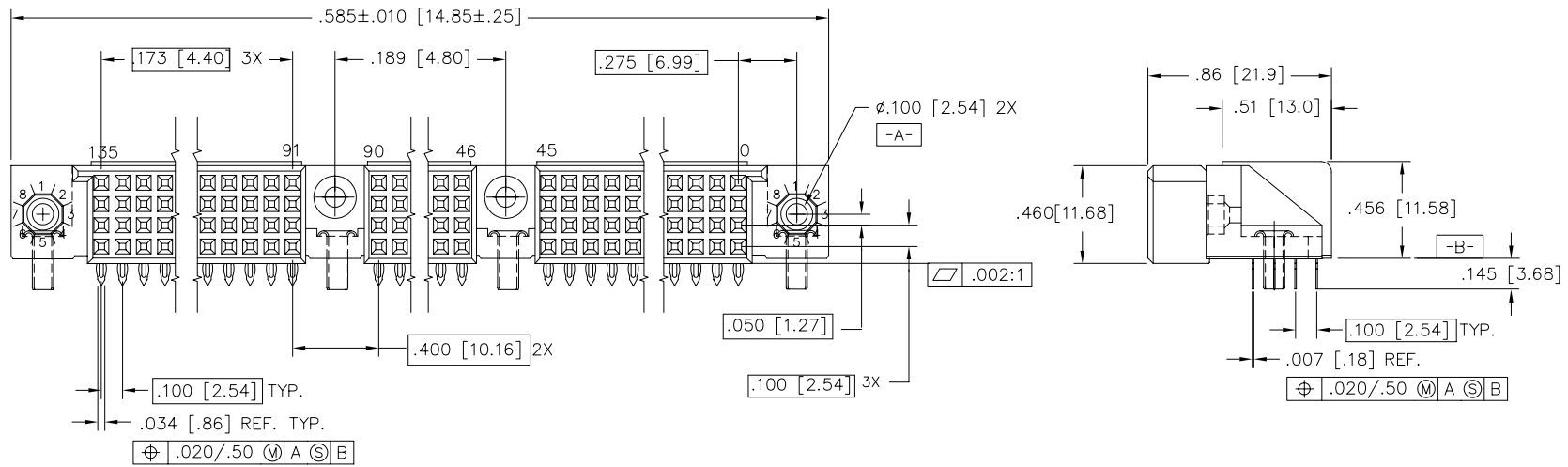
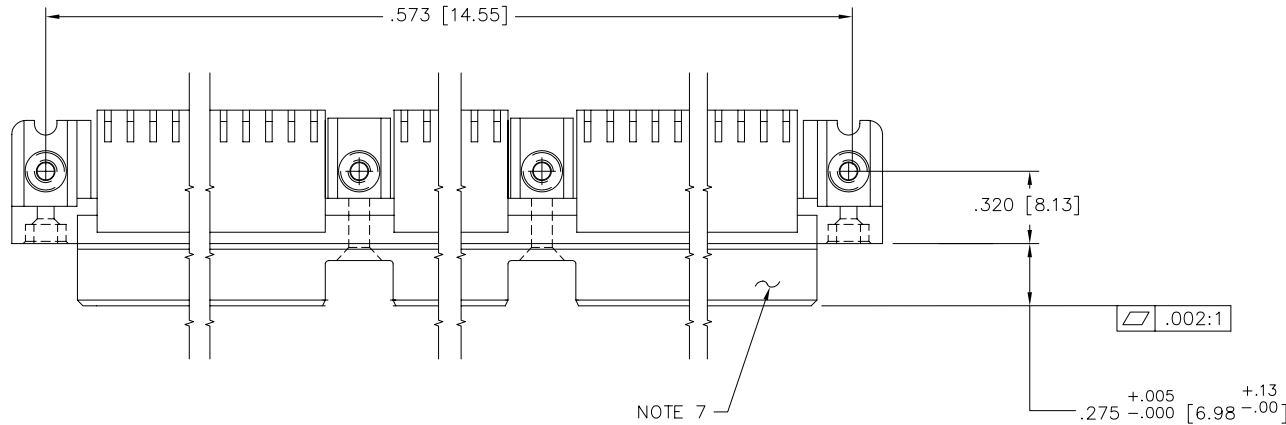


- NOTES FOR -XX001 AND XX001LF ONLY:
1. ALL POSITIONS LOADED WITH .145[3.68] TAIL LENGTH.
 2. SIZE 4 x 150
TOTAL NUMBER OF POSITIONS - 600
TOTAL NUMBER OF POSITIONS LOADED - 600

mat'l. code SEE NOTE 3	surface ISO 1302 ✓	tolerance ISO 406 ISO 1101	projection INCH/MM	product family HPC
ltr	ecn	no dr	date	title
v				4 ROW R/A RECEPTACLE PRESS FIT, 2 GUIDE PINS
				scale 1:1
		dr	G.PETERS 6/12/93	 sheet 4 of 6 size A3 type Product Customer Drawing
		enr	S.CLARK 6/12/93	
		chr	S.CLARK 6/12/93	
		appd	S.CLARK 6/12/93	
sheet index	revision sheet			

PRODUCT NUMBER
50644-XX002
50644-XX002LF

50644-XX002 AND 50644-XX002LF ONLY



NOTES FOR -XX002 AND XX002LF ONLY:

1. ALL POSITIONS LOADED WITH .145[3.68] TAIL LENGTH.
2. SIZE 4 x 135
TOTAL NUMBER OF POSITIONS - 540
TOTAL NUMBER OF POSITIONS LOADED - 540

mat'l. code		surface ISO 1302 ✓	tolerance ISO 406 ISO 1101	projection INCH/MM	product family HPC
ltr	ecn	no	dr	date	tolerances unless otherwise specified
v					angles linear 0°±2'
					.xx±.01/.3 .xxx±.005/.13 .xxxx±.0020/.051
			dr	G.PETERS	6/12/93
			enr	S.CLARK	6/12/93
			chr	S.CLARK	6/12/93
			appd	S.CLARK	6/12/93
sheet index	revision sheet				
				scale 1:1	title 4 ROW R/A RECEPTACLE PRESS FIT, 2 GUIDE PINS
				FCJ	dwg no 50644
					sheet 5 of 6
				type Product Customer Drawing	



Copyright FCI

PRODUCT NUMBER NOTE 1	NUMBER OF POSITIONS NOTE 2	TAIL LENGTH ±.010/0.25	SPECIAL FEATURES SEE NOTE 10	SOLDER TAIL PLATING	PLATING IN CONTACT AREA	EYELET PROTRUSION
50644 -1YYYE	YYY	.125/3.18	NONE	TIN-LEAD	30u"/.76u Au	N/A
50644 -5YYYELF	YYY	.125/3.18	NONE	TIN	30u"/.76u GXT	N/A
50644 -1YYYEA	YYY	.125/3.18	"A"	TIN-LEAD	30u"/.76u Au	N/A
50644 -5YYYEALF	YYY	.125/3.18	"A"	TIN	30u"/.76u GXT	N/A
50644 -1YYYEB	YYY	.125/3.18	"B"	TIN-LEAD	30u"/.76u Au	0.145/3.68
50644 -5YYYEBLF	YYY	.125/3.18	"B"	TIN	30u"/.76u GXT	0.145/3.68
50644 -1YYYEC	YYY	.125/3.18	"C"	TIN-LEAD	30u"/.76u Au	0.115/2.92
50644 -5YYYECLF	YYY	.125/3.18	"C"	TIN	30u"/.76u GXT	0.115/2.92
50644 -1YYYED	YYY	.125/3.18	"D"	TIN-LEAD	30u"/.76u Au	0.115/2.92
50644 -5YYYEDLF	YYY	.125/3.18	"D"	TIN	30u"/.76u GXT	0.115/2.92
50644 -1YYYF	YYY	.145/3.68	NONE	TIN-LEAD	30u"/.76u Au	N/A
50644 -5YYYFLF	YYY	.145/3.68	NONE	TIN	30u"/.76u GXT	N/A
50644 -1YYYFA	YYY	.145/3.68	"A"	TIN-LEAD	30u"/.76u Au	N/A
50644 -5YYYFALF	YYY	.145/3.68	"A"	TIN	30u"/.76u GXT	N/A
50644 -1YYYFC	YYY	.145/3.68	"C"	TIN-LEAD	30u"/.76u Au	0.145/3.68
50644 -5YYYFCLF	YYY	.145/3.68	"C"	TIN	30u"/.76u GXT	0.145/3.68
50644 -1YYYFD	YYY	.145/3.68	"D"	TIN-LEAD	30u"/.76u Au	0.145/3.68
50644 -5YYYFDLF	YYY	.145/3.68	"D"	TIN	30u"/.76u GXT	0.145/3.68
50644 -XX001	600	.145/3.68	"D"	TIN-LEAD	30u"/.76u Au	0.115/2.92
50644 -XX001LF	600	.145/3.68	"D"	TIN	30u"/.76u GXT	0.115/2.92
50644 -XX002	540	.145/3.68	"B"	TIN-LEAD	30u"/.76u Au	0.145/3.68
50644 -XX002LF	540	.145/3.68	"B"	TIN	30u"/.76u GXT	0.145/3.68
50644 -1YYYELF	YYY	.125/3.18	NONE	TIN	30u"/.76u Au	N/A
50644 -1YYYEALF	YYY	.125/3.18	"A"	TIN	30u"/.76u Au	N/A
50644 -1YYYEBLF	YYY	.125/3.18	"B"	TIN	30u"/.76u Au	0.145/3.68
50644 -1YYYECLF	YYY	.125/3.18	"C"	TIN	30u"/.76u Au	0.115/2.92
50644 -1YYYEDLF	YYY	.125/3.18	"D"	TIN	30u"/.76u Au	0.115/2.92
50644 -1YYYFLF	YYY	.145/3.68	NONE	TIN	30u"/.76u Au	N/A
50644 -1YYYFALF	YYY	.145/3.68	"A"	TIN	30u"/.76u Au	N/A
50644 -1YYYFCLF	YYY	.145/3.68	"C"	TIN	30u"/.76u Au	0.145/3.68
50644 -1YYYFDLF	YYY	.145/3.68	"D"	TIN	30u"/.76u Au	0.145/3.68



Copyright FCI

mat'l. code		surface ISO 1302 ✓	tolerance ISO 406 ISO 1101	projection 	product family HPC
ltr	ecn	no	dr	date	tolerances unless otherwise specified
V					angles linear .XX±.01/.3 .XXX±.005/.13 .XXXX±.0020/.051
					INCH/MM
					scale 1:1
			dr	G.PETERS	6/12/93
			enr	S.CLARK	6/12/93
			chr	S.CLARK	6/12/93
			appd	S.CLARK	6/12/93
sheet index	revision sheet				
				title 4 ROW R/A RECEPTACLE PRESS FIT, 2 GUIDE PINS	
				dwg no 50644 sheet 6 of 6 size A3	
				type Product Customer Drawing	